

CHAPTER IV

RESULT OF THE STUDY AND DISCUSSION

In this chapter the the writer explain about The results of the research on the students' perception toward english language development program in ma'had al jamiah of stain palangka raya by using questionnaire as the instrument for collecting the data. The presented data consisted of responses, central tendency and standard deviation.

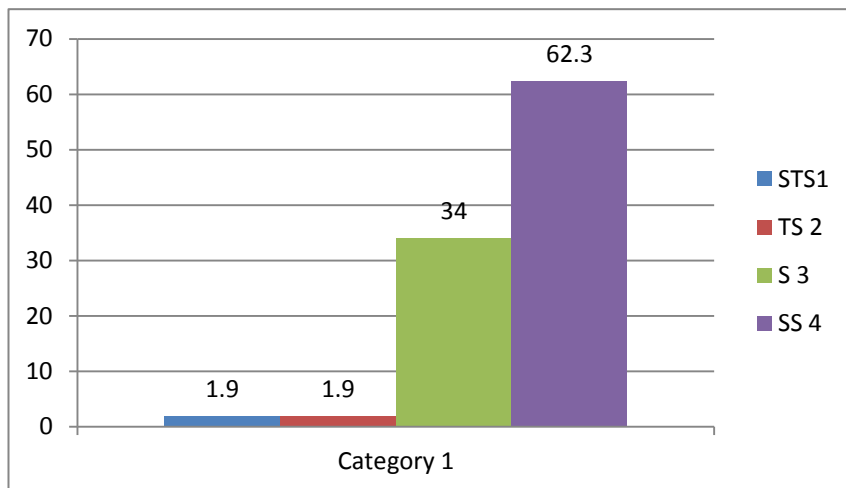
1. The Result of Data Analyze

In order to analyze the results of the research on students' perception toward english language development program in Ma'had Al Jamiah of stain Palangka Raya by using questionnaire, the instrument for collecting the data. The data were displaying as follow

For analyzing the results of the questionnaire the writer used the data displaying as follow:

Figure. 3**Table 3.1 students perception, item 1**

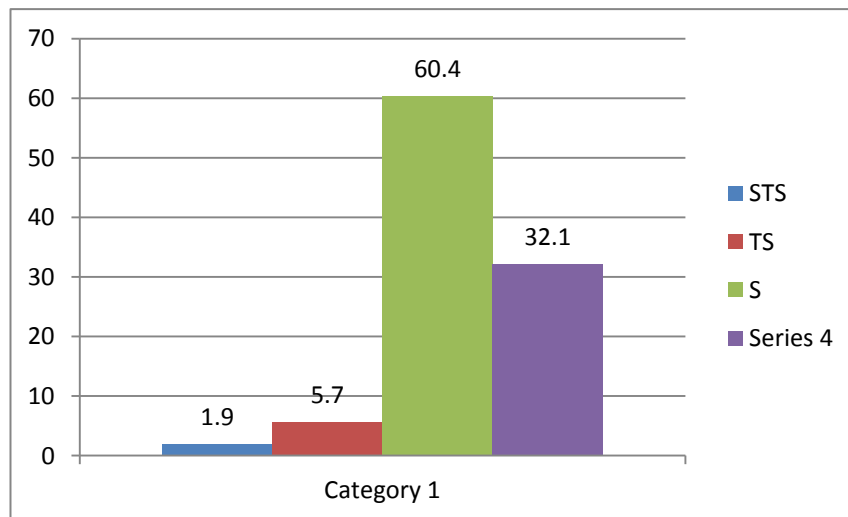
	Frequency	Percent	Valid Percent	Cumulative Percent
Valid 1	1	1.9	1.9	1.9
2	1	1.9	1.9	3.8
3	18	34.0	34.0	37.7
4	33	62.3	62.3	100.0
Total	53	100.0	100.0	

Chart 3.1 student perception, item 1

Item stated “study english is one of important for my future live , there were , 1 student (1,9%) Strongly disagreed, 1 student (1,9%) disagreed, 18 students (34%) agreed and 33 students (62%3) Strongly agreed.

Table 3.2 The students perception, item 2

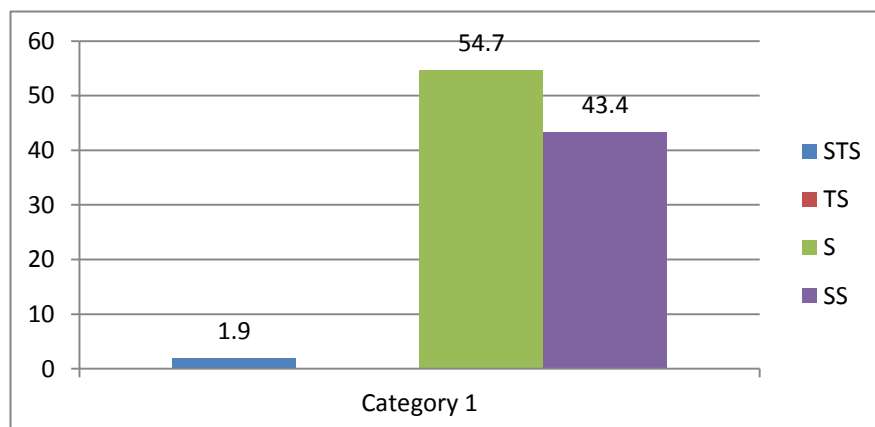
	Frequency	Percent	Valid Percent	Cumulative Percent
Valid 1	1	1.9	1.9	1.9
2	3	5.7	5.7	7.5
3	32	60.4	60.4	67.9
4	17	32.1	32.1	100.0
Total	53	100.0	100.0	

Chart 3.2 Student perception, item 2

Item 2, stated “they interesting with English development for about 1 year in Mahad Al-jamiaah. There were 1 student (1,9%) Strongly disagreed, 3 students (5,4) disagree, 32 students (60,4%) agreed and 17 students (32,1%) strongly agreed.

Table 3.3 Students perception, item 3

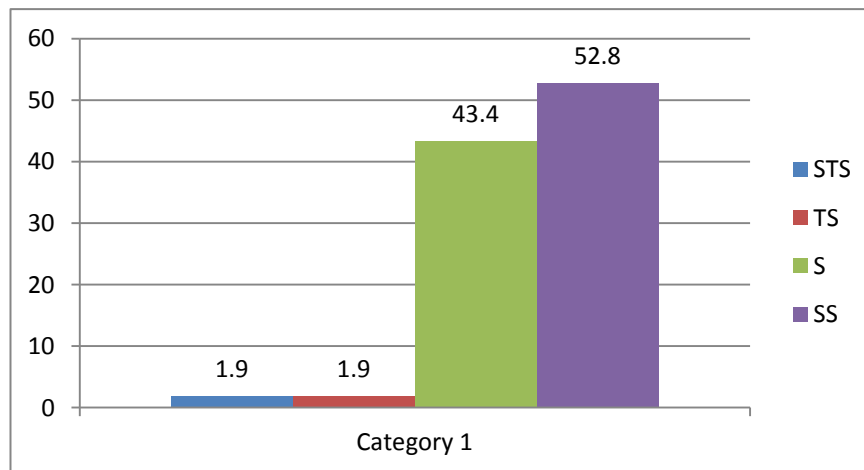
	Frequency	Percent	Valid Percent	Cumulative Percent
Valid 1	1	1.9	1.9	1.9
3	29	54.7	54.7	56.6
4	23	43.4	43.4	100.0
Total	53	100.0	100.0	

Chart 3.3 Student perception, item 3

Item 3 stated “giving vocabulary in the morning, can help to improve English language skill, There were 1 student (1,9%) Strongly disagreed, 0 students (0 %) disagree, 29 students (54,7%) agreed and 23 students (43,4%) strongly agreed.

Table 3.4 Students perception, item 4

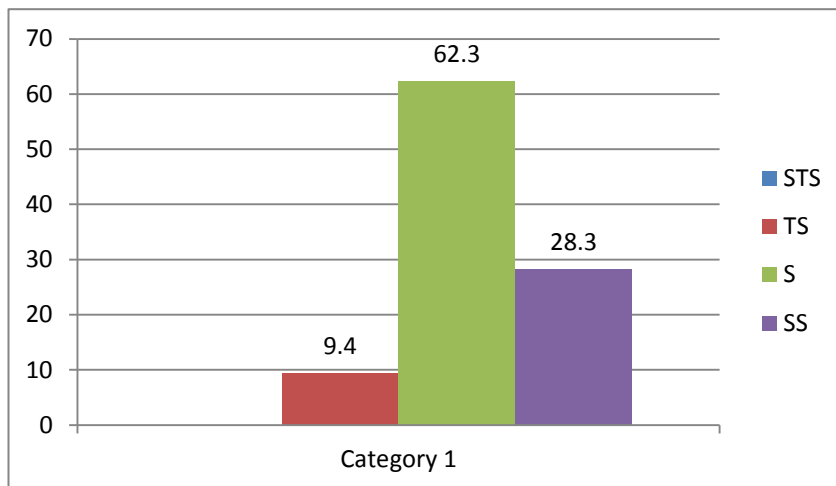
	Frequency	Percent	Valid Percent	Cumulative Percent
Valid 1	1	1.9	1.9	1.9
2	1	1.9	1.9	3.8
3	23	43.4	43.4	47.2
4	28	52.8	52.8	100.0
Total	53	100.0	100.0	

Chart 3.4 Student perception, item 4

Item 4, stated “compulsory conversation use English to improve English skill get positive respond. There were 1 student (1,9%) **strongly disagreed**, 1 students (1,9%) **disagree**, 23 students (43,4%) **agreed** and 28 students (52,8%) **strongly agreed**.

Table3.5 Students perception, item 5

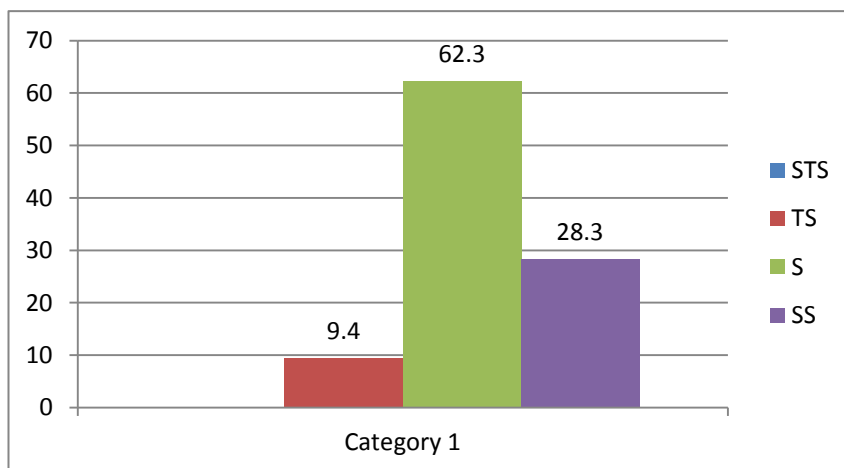
	Frequency	Percent	Valid Percent	Cumulative Percent
Valid 2	5	9.4	9.4	9.4
3	33	62.3	62.3	71.7
4	15	28.3	28.3	100.0
Total	53	100.0	100.0	

Chart 3.5 Student perception, item 5

Item 5 stated “speech help to developing English skill and make the students get more confidence for speech in public. Get positive respond from the students. There were 0 student (0) **strongly disagreed**, 5 students (9, 4) **disagree**, 33 students (62, 3%) **agreed** and 15 students (28, 3%) **strongly agreed**.

Table 3.6 The students perception, item 6

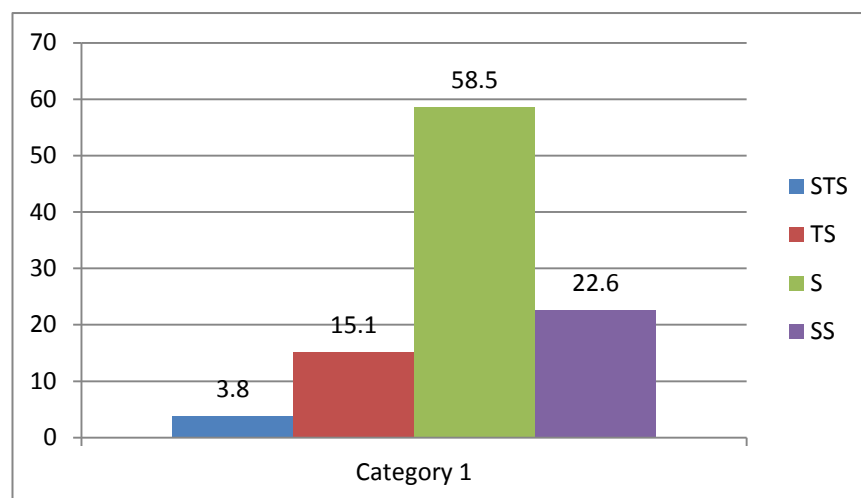
		Frequency	Percent	Valid Percent	Cumulative Percent
Valid	2	5	9.4	9.4	9.4
	3	33	62.3	62.3	71.7
	4	15	28.3	28.3	100.0
Total		53	100.0	100.0	

Chart 3.6 student perception, item 6

Item 6 stated “students like debate use English is get good respond from students. Get positive respond from the students. There were 0 student (0) **strongly disagreed**, 5 students (9, 4) **disagree**, 33 students (62, 3%) **agreed** and 15 students (28, 3%) **strongly agreed**.”

Table 3.7 students perception, item 7

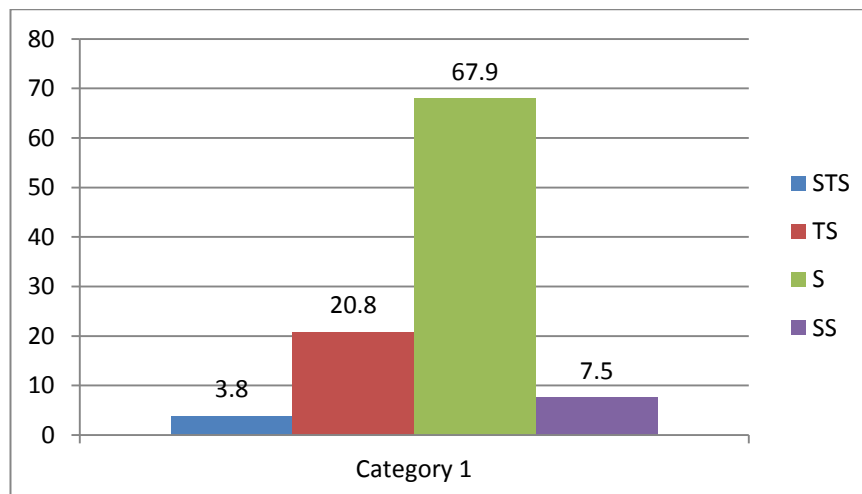
	Frequency	Percent	Valid Percent	Cumulative Percent
Valid 1	2	3.8	3.8	3.8
2	8	15.1	15.1	18.9
3	31	58.5	58.5	77.4
4	12	22.6	22.6	100.0
Total	53	100.0	100.0	

Chart 3.7 of student perception, item 7

Item,7 stated“the students like with Language Court in Mahad. There were 2 students (3, 8%) **strongly disagreed**, 8 students (15, 1%) **disagree**, 31 students (58, 5%) **agreed** and 7 students (13, 2%) **strongly agreed**.

Table 3.8 students perception, item 8

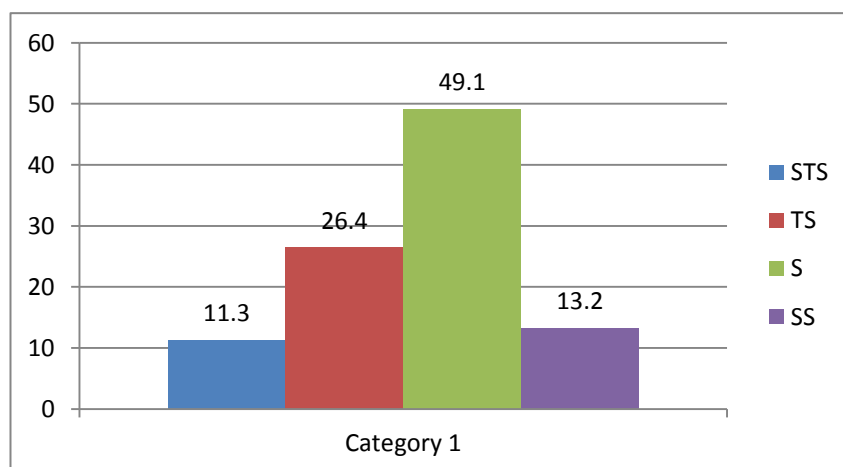
		Frequency	Percent	Valid Percent	Cumulative Percent
Valid	1	2	3.8	3.8	3.8
	2	11	20.8	20.8	24.5
	3	36	67.9	67.9	92.5
	4	4	7.5	7.5	100.0
	Total	53	100.0	100.0	

Chart 3.8 student perception, item 8

Item. 8 stated “students always present in English language program. There were 2 student (3,8%) **strongly disagreed**, 11 students (20,8%) **disagree**, 36 students (67,9%) **agreed** and 4 students (7,5%) **strongly agreed**.”

Table 3.9 students perception, item 9

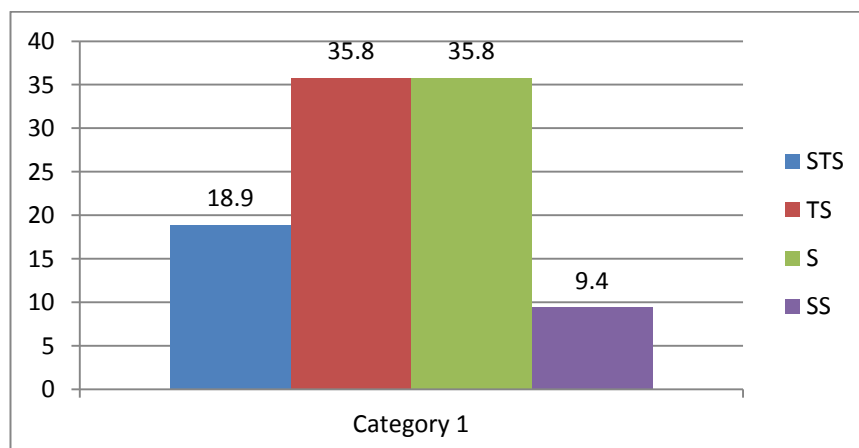
		Frequency	Percent	Valid Percent	Cumulative Percent
Valid	1	6	11.3	11.3	11.3
	2	14	26.4	26.4	37.7
	3	26	49.1	49.1	86.8
	4	7	13.2	13.2	100.0
	Total	53	100.0	100.0	

Chart 3.9 student perception, item 9

Item. 9 stated “English atmosphere in Mahad is good. There were 6 student (11,3%) **strongly disagreed**, 14 students (26,4%) **disagree**, students (58,5%) **agreed** and 12 students (22,6%) **strongly agreed**.”

Table 3.10 students perception, item 10

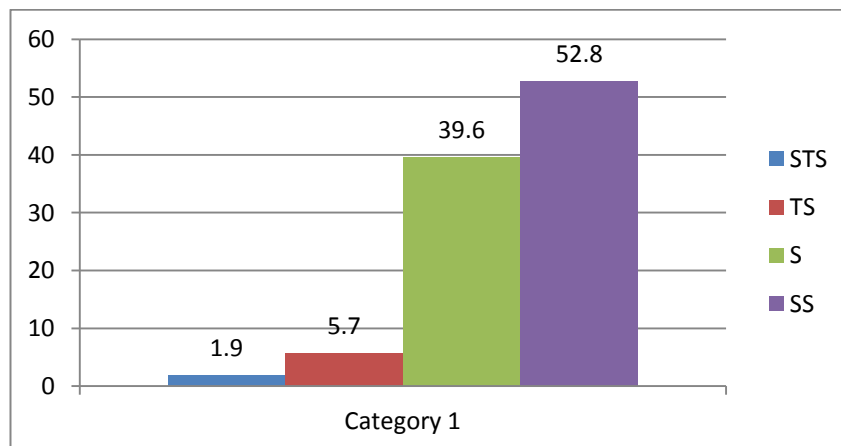
	Frequency	Percent	Valid Percent	Cumulative Percent
Valid 1	10	18.9	18.9	18.9
2	19	35.8	35.8	54.7
3	19	35.8	35.8	90.6
4	5	9.4	9.4	100.0
Total	53	100.0	100.0	

Chart 3.10 student perception, item 10

Item. 10 stated “students study English because obligation in Ma’had. There were 10 students (18,9 %) **strongly disagreed**, 19 students (35,8%) **disagree**, 19 students (35,8 %) **agreed** and 5 students (9,4 %) **strongly agreed**.”

Table 3.11 students perception, item 11

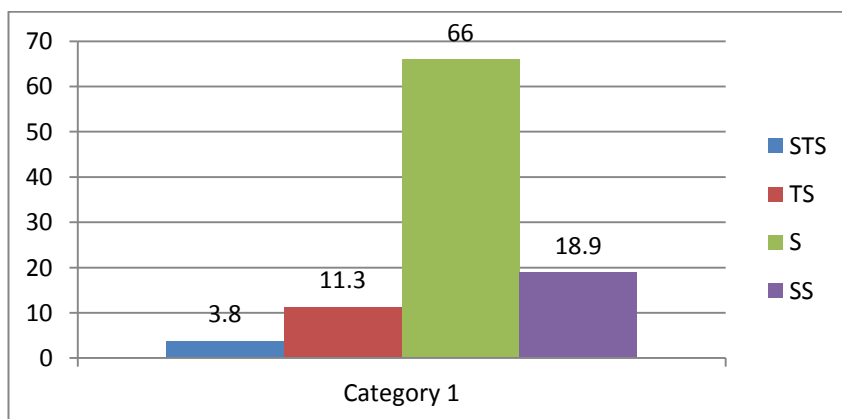
	Frequency	Percent	Valid Percent	Cumulative Percent
Valid 1	1	1.9	1.9	1.9
2	3	5.7	5.7	7.5
3	21	39.6	39.6	47.2
4	28	52.8	52.8	100.0
Total	53	100.0	100.0	

Chart 3.11 student perception, item 11

Item. 11 stated “students study English because they self, There were 1 student (1, 9%) **strongly disagreed**, 3 students (5,7%) **disagree**, 21 students (39,6%) **agreed** and 28 students (52,8%) **strongly agreed**.

Table 3.12 students perception, item 12

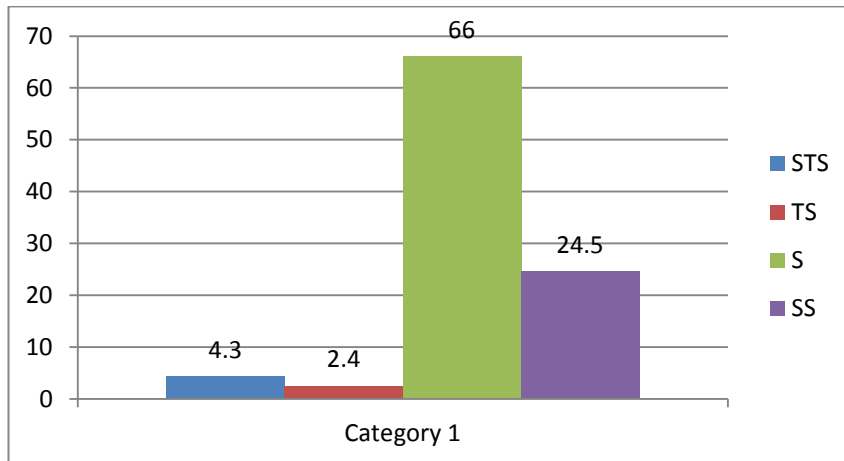
	Frequency	Percent	Valid Percent	Cumulative Percent
Valid 1	2	3.8	3.8	3.8
2	6	11.3	11.3	15.1
3	35	66.0	66.0	81.1
4	10	18.9	18.9	100.0
Total	53	100.0	100.0	

Chart 3.1 student perception, item 12

Item. 12 stated “, the students amazed with Musrif or musrifah English ability. There were 2 student (3, 8%) **strongly disagreed**, 8 students (15,1%) **disagree**, 31 students (58, 5%) **agreed** and 12 students (22, 6%) **strongly agreed**.”

Table 3.13 students perception, item 13

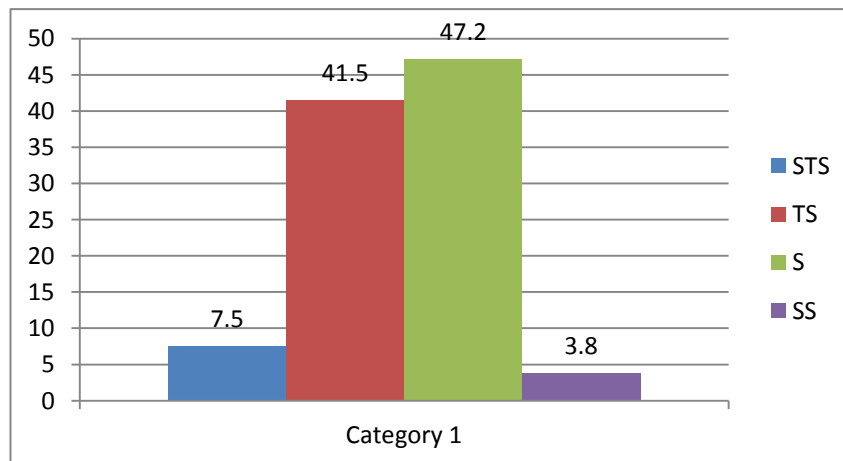
	Frequency	Percent	Valid Percent	Cumulative Percent
Valid 1	1	1.9	1.9	1.9
2	4	7.5	7.5	9.4
3	35	66.0	66.0	75.5
4	13	24.5	24.5	100.0
Total	53	100.0	100.0	

Chart.3.13 student perception, item 13

Item. 13 stated “, musrif and musrifah be model of student. There were 1 student (1, 9%) **strongly disagreed**, 4 students (7,5%) **disagreed**, 35 students (66,0%) **agreed** and 13 students (24,5%) **strongly agreed**.

Table 3.14 students perception, item 14

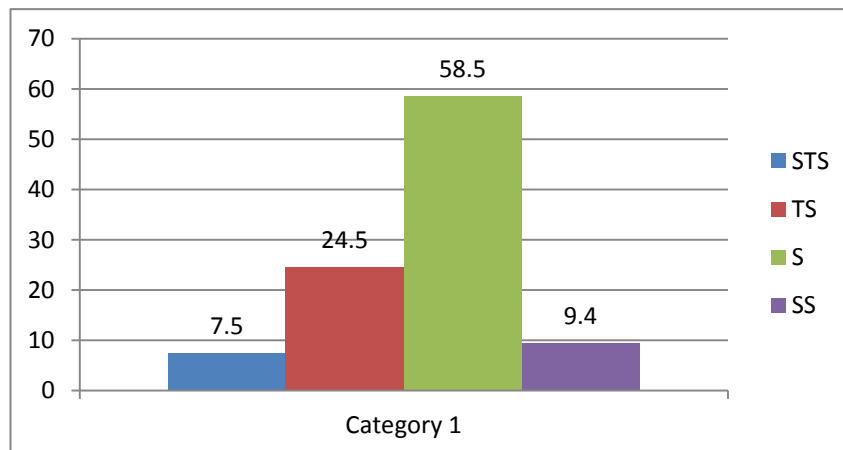
	Frequency	Percent	Valid Percent	Cumulative Percent
Valid 1	4	7.5	7.5	7.5
2	22	41.5	41.5	49.1
3	25	47.2	47.2	96.2
4	2	3.8	3.8	100.0
Total	53	100.0	100.0	

Chart 3.14 student perception, item 14

Item 14 stated “musrif or musrifah very consistent conversation in English. . . . There were student (7,5%) **strongly disagreed**, 22 students (41,5%) **disagree**, 25 students (47,2%) **agreed** and 2 students (3,8%) **strongly agreed**.

Table 3.14 students perception, item 15

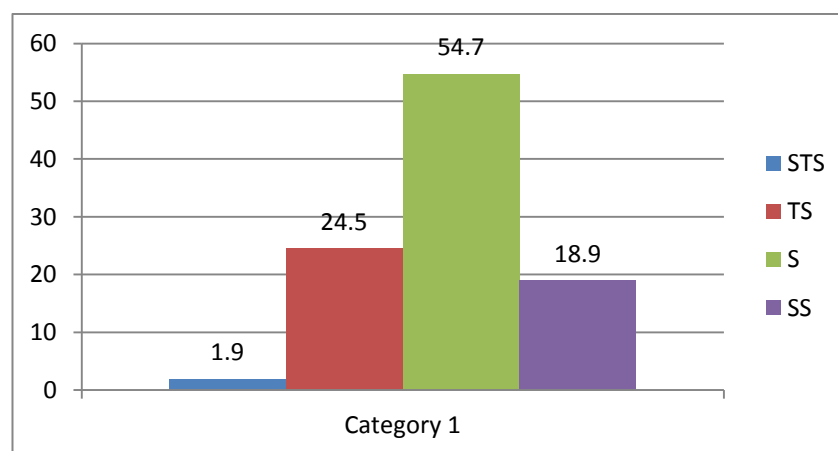
	Frequency	Percent	Valid Percent	Cumulative Percent
Valid 1	4	7.5	7.5	7.5
2	13	24.5	24.5	32.1
3	31	58.5	58.5	90.6
4	5	9.4	9.4	100.0
Total	53	100.0	100.0	

Chart 3.15 students' perception, item 15

Item. 15 stated “English students developing monitor by musrif or musrifah. There were 4 students (7,5%) **strongly disagreed**, 13 students (24,5%) **disagree**, 31 students (58,5%) **agreed** and 5 students (9,4%) **Strongly Agree**.”

Table 3.16 student's perception, item 16

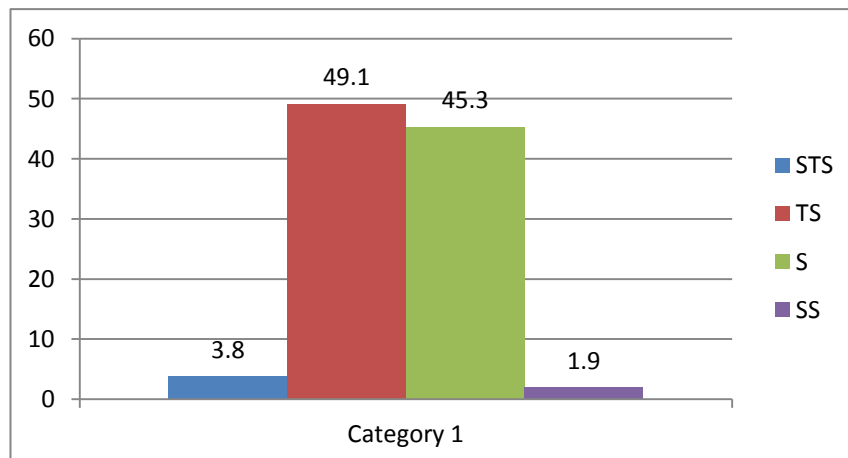
		Frequency	Percent	Valid Percent	Cumulative Percent
Valid	1	1	1.9	1.9	1.9
	2	13	24.5	24.5	26.4
	3	29	54.7	54.7	81.1
	4	10	18.9	18.9	100.0
	Total	53	100.0	100.0	

Chart 3.16 students' perception, item 16

Item. 16 stated “English language developing get rise because joined English language program in Mahad. There were 1 student (1,9%) **strongly disagreed**, 13 students (24,5%) **disagree**, 29 students (54,7%) **agreed** and 10 students (18,9%) **strongly agreed**.

Table 3.17 students' perception, item 17

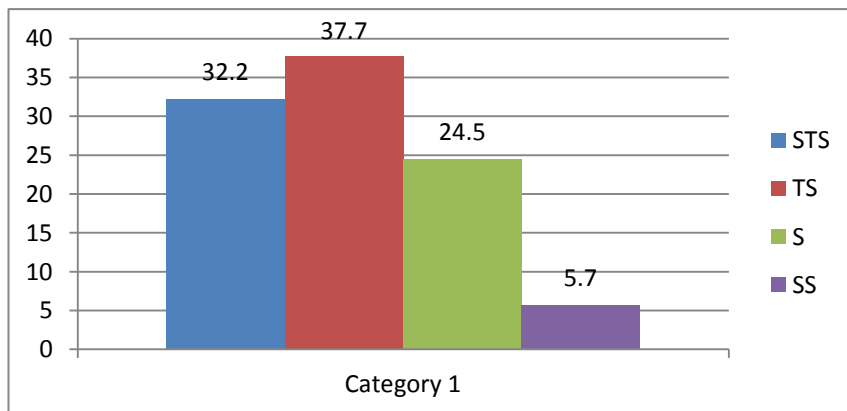
	Frequency	Percent	Valid Percent	Cumulative Percent
Valid 1	2	3.8	3.8	3.8
2	26	49.1	49.1	52.8
3	24	45.3	45.3	98.1
4	1	1.9	1.9	100.0
Total	53	100.0	100.0	

Chart 3.17 student perception, item 17

Item. 17 stated “all of the English language program run very effective and agreeable with planning. There were 2 student (3,8%) **strongly disagreed**, 26 students (49,1%) **disagree**, 24 students (45,3%) **agreed** and 1 students (1,9%) **strongly agreed**.

Table 3.18 students' perception, item 18

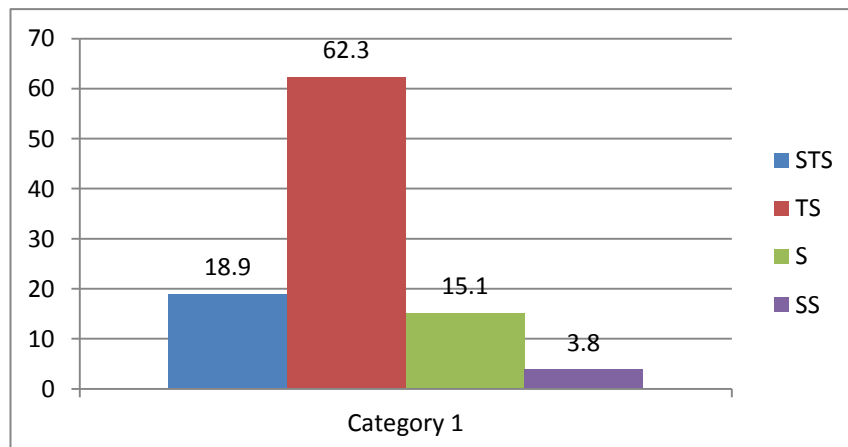
	Frequency	Percent	Valid Percent	Cumulative Percent
Valid 1	17	32.1	32.1	32.1
2	20	37.7	37.7	69.8
3	13	24.5	24.5	94.3
4	3	5.7	5.7	100.0
Total	53	100.0	100.0	

Chart 3.18 students' perception, item 18

Item. 18 stated “students always join English activity because perforce. There were 17 student (32, 1%) **strongly disagreed**, 20 students (37,7%) **disagree**, 13 students (24,5%) **agreed** and 3 students (5,7%) **strongly agreed**.

Table 3.19 students perception, item 19

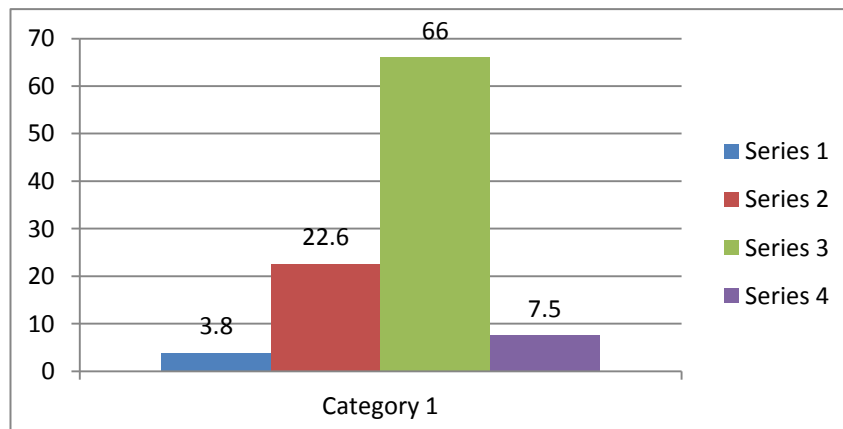
	Frequency	Percent	Valid Percent	Cumulative Percent
Valid 1	2	3.8	3.8	3.8
2	8	15.1	15.1	18.9
3	33	62.3	62.3	81.1
4	10	18.9	18.9	100.0
Total	53	100.0	100.0	

Chart 3.19 students' perception, item 19

Item . 19 stated“students join English activity because they like English There were 2 student (3,8%) **strongly disagreed**, 8 students (15,1%) **disagree**, 33 students (62,3%) **agreed** and 10 students (18,9%) **strongly agree**

Table 3.20 students' perception, item 20

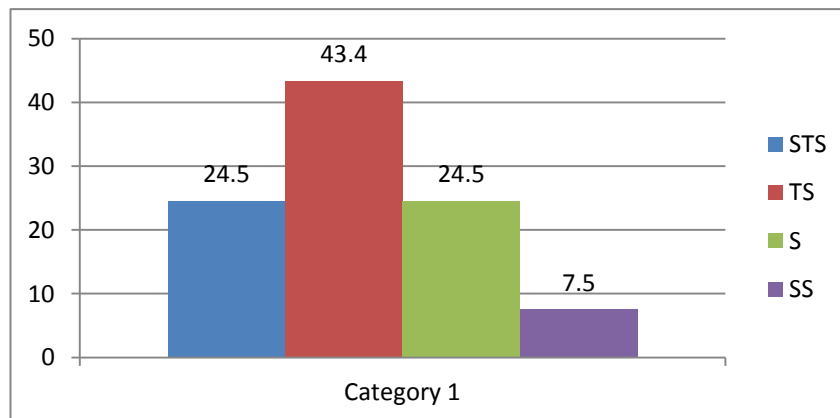
	Frequency	Percent	Valid Percent	Cumulative Percent
Valid 1	2	3.8	3.8	3.8
2	12	22.6	22.6	26.4
3	35	66.0	66.0	92.5
4	4	7.5	7.5	100.0
Total	53	100.0	100.0	

Chart 3.20 students' perception, item 20

Item. 20 stated “Before I joining English program in Mahad I difficult for speaking English. But Students Joined English program in Mahad, students speak English fluently. There were 2 student (3,8%) **strongly disagreed**, 12 students (22,6%) **disagree**, 35 students (66%) **agreed** and 4 students (7,5%) **strongly agreed**.

Table 3.21 students' perception, item 21

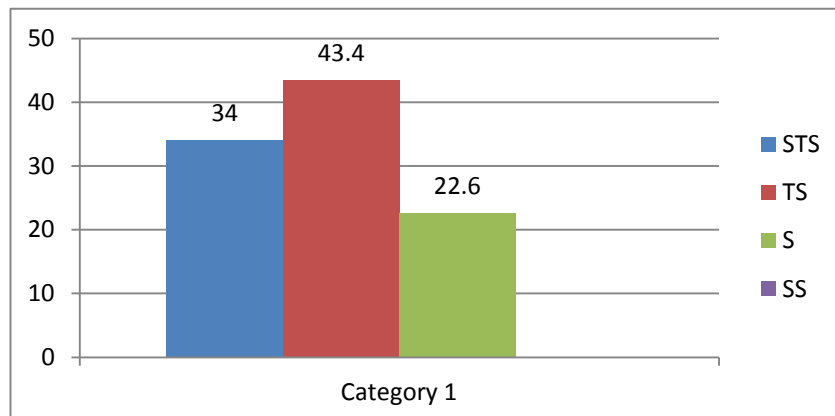
	Frequency	Percent	Valid Percent	Cumulative Percent
Valid 1	13	24.5	24.5	24.5
2	23	43.4	43.4	67.9
3	13	24.5	24.5	92.5
4	4	7.5	7.5	100.0
Total	53	100.0	100.0	

Chart 3.21 students' perception, item 21

Item. 21 stated“, if student not obliged, student do not join English language program in mahad. There were 13 student (24,5%) **strongly disagreed**, 23 students (43,4%) **disagree**, 13 students (24,5%) **agreed** and 4 students (7,5%) **strongly agreed**.

Table 3.22 students perception, item 22

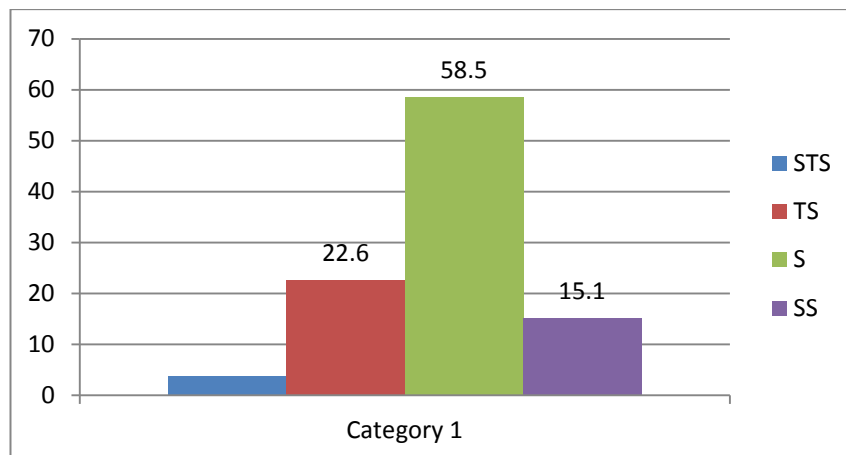
	Frequency	Percent	Valid Percent	Cumulative Percent
Valid 1	18	34.0	34.0	34.0
2	23	43.4	43.4	77.4
3	12	22.6	22.6	100.0
Total	53	100.0	100.0	

Chart 3.22 students perception, item 22

Item. 22 stated “Public Speak makes students not confidence. There were 18 student (34, 0%) **strongly disagreed**, 23 students (43, 4%) **disagree**, 12 students (11,%) **agreed** and 0 student (0 %) **strongly agreed**.

Table 3.23 students' perception, item 23

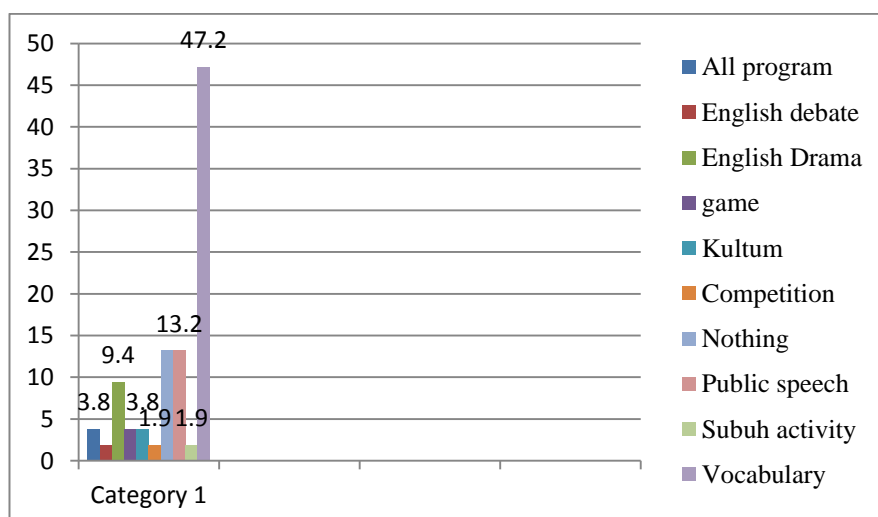
	Frequency	Percent	Valid Percent	Cumulative Percent
Valid 1	2	3.8	3.8	3.8
2	12	22.6	22.6	26.4
3	31	58.5	58.5	84.9
4	8	15.1	15.1	100.0

Chart 3.23 student perception, item 23

Item. 23 stated “students like begin conversation use English language. There were 2 student (3, 8) **strongly disagreed**, 12 students (22,6%) **disagree**, 31 students (58,5%) **agreed** and 8 students (15,1%) **strongly agreed**.

Table 3.24 students' perception, item 24

Program	Frequency	Percent	Valid Percent	Cumulative Percent
All program	2	3.8	3.8	3.8
English debate	1	1.9	1.9	5.7
English Drama	5	9.4	9.4	15.1
game	2	3.8	3.8	18.9
Kultum	2	3.8	3.8	22.6
Competition	1	1.9	1.9	24.5
Nothing	7	13.2	13.2	37.7
Public speech	7	13.2	13.2	50.9
Subuh activity	1	1.9	1.9	52.8
Vocabulary	25	47.2	47.2	100.0
Total	53	100.0	100.0	

Chart of student perception, item 24

Item 24, stated' student's favorite English program, they were 3,8% or 2 students all program, 1,9 % or 1 student English debate, 9,4% or 5 students

English Drama, 3,8 % or 3,8 students game, 3,8 % or 3,8 students kultum, 1,9% or 1 student Competition, 13,2 % or 7 students nothing, 13,2 % or 7 students public speech, 1,9 % or 1 student subuh activity, 47,2 % or 25 students vocabulary.

The writer problem stated: “How are the students’ perceptions toward English language development program in Ma’had Al Jamiah of STAIN Palangka Raya. There are 5 English language program:

1. **Good Morning English**, Include in item 3 giving vocabulary in the morning, can help to improve English language skill. By the data above it that **98% or 52** students by 53 students **agree** with, giving vocabulary in the morning and item 24, student’s favorite English program, by the data above it that **47,2 % or 25** students chose vocabulary.
2. **English Conversation**, include in item 4 , students are compulsory for conversation use English to improve English skill, base on the data that **96% or 51** by 53 students that **agreed** students are compulsory for conversation use English to improve English skill, item 20 before I joining English program in Mahad I difficult for speaking English. But Students Joined English program in Mahad, students speak English fluently, base on the date **73,5% or 39** students by 53 students agreed that before students joining English program in Mahad, students difficult for speaking English. But Students Joined English program in Mahad, students speak English fluently and item 23 students like begin

conversation use English language, base on the data **73,6% or 39** students by 53 students agreed that students like begin conversation use English language.

3. **Public Speech And Master Of Ceremony**, include in item 5, public speech help students to develop English skill and make the students get more confidence for speech in public, Base on the data that **90,6% or 48** students by 53 students **agreed** that public speech help students to develop English skill and make the students get more confidence for speech in public and item 22 Public Speak makes students not confidence, base on the data **77.8% or 41** students by 53 disagreed that Public Speak makes students not confidence. There were 18 student.
4. **Let's Argue in English (English Debate)**, include in item 6, students like debate use English, by the data above it that **90.6% or 48** students by 53 students **agreed** that students like debate use English.
5. **Language Court**, include in item 7, the students like with Language Court in Mahad, Base on the data **71, 7% or 38** students by 53 students that **agreed** with Language Court in Mahad.

In conclusion, the result of the study from the data were found by doing the research on students' perceptions toward English language development program in Ma'had Al Jamiah of STAIN Palangka Raya found that most of the students have positive.

A. Discussion.

The respondents of this subject were 53 students on the students' who joined the program Ma'had Al Jamiah of STAIN Palangka Raya. The students on Academic year 2013/2014.

Item 1, study english is one of important for their future live , there were , 1 student (1,9%) Strongly disagreed, 1 student (1,9%) disagreed, 18 students (34%) agreed and 33 students (62,2%) strongly agreed. By the data above it could be seen that **96,2% or 51** students by 53 the students **agreed** that English is one of important for their live.

Item 2, Students interesting with English development for about 1 year in Mahad Al-jamiaah. There were 1 student (1,9%) Strongly disagreed, 3 students (5,4) disagree, 32 students (60,4%) agreed and 17 students (32,1%) strongly agreed. By the data above it could be seen that **92,5% or 49** students by 53 students **agreed** that development for about 1 year in Mahad Al-jamiaah.

Item 3, "giving vocabulary in the morning, can help to improve English language skill, There were 1 student (1,9%) Strongly disagreed, 0 students (0%) disagree, 29 students (54,7%) agreed and 23 students (43,4%) strongly agreed. By the data above it that **98% or 52** students by 53 students **agree** with, giving vocabulary in the morning.

Item 4, students are compulsory for conversation use English to improve English skill. There were 1 student (1,9%) strongly disagreed, 1 students (1,9%) disagree, 23 students (43,4%) agreed and 28 students (52,8%) strongly agreed.

Base on the data that **96% or 51** by 53 students that **agreed** students are compulsory for conversation use English to improve English skill.

Item 5, public speech help students to develop English skill and make the students get more confidence for speech in public. Get positive respond from the students. There were 0 student (0) strongly disagreed, 5 students (9,4) disagree, 33 students (62,3%) agreed and 15 students (28,3%) strongly agreed. Base on the data that **90,6% or 48** students by 53 students **agreed** that public speech help students to develop English skill and make the students get more confidence for speech in public.

Item 6, students like debate use English. Get positive respond from the students. There were 0 student (0) strongly disagreed, 5 students (9,4) disagree, 33 students (62,3%) agreed and 15 students (28,3%) strongly agreed. By the data above it that **90,6% or 48** students by 53 students **agreed** that students like debate use English.

Item 7, the students like with Language Court in Mahad. There were 2 student (3,8%) strongly disagreed, 8 students (15,1%) disagree, 31 students (58,5%) agreed and 7 students (13,2%) strongly agreed. Base on the date **71, 7% or 38** students by 53 students that **agreed** with Language Court in Mahad.

Item 8“students always present in English language program. There were 2 student (3,8%) strongly disagreed, 11 students (20,8%) disagree, 36 students (67,9%) agreed and 4 students (7,5%) strongly agreed. Base on the date **75, 4%**

or **40** students by 53 students **agree** that students always present in English language program.

Item 9, English atmosphere in Mahad is good , . There were 6 student (11,3%) strongly disagreed, 14 students (26,4%) disagree, 21 students (58,5%) agreed and 12 students (22,6%) strongly agreed. Base on the date **81, 1% or 33** students by 53 students **agree** with English atmosphere in Ma'had.

Item 11, students study English because their self. There were 1 student (1,9%) strongly disagreed, 3 students (5,7%) disagree, 21 students (39,6%) agreed and 28 students (52,8%) strongly **agreed**. Base on the **date 92,4% or 49** students by 53 **agreed** that students that students study English because their self.

item12, the students amazed with Musrif or musrifah English ability. There were 2 student (3,8%) strongly disagreed, 8 students (15,1%) disagree, 31 students (58,5%) agreed and 12 students (22,6%) strongly agreed. base on the date that **81,1% or 43** students by 53 students **agreed** students amazed with Musrif or musrifah English ability.

Item 13, musrif and musrifah were become model of students in Ma'had. There were 1 student (1,9%) strongly disagreed, 4 students (7,5%) disagreed, 35 students (66,0%) agreed and 13 students (24,5%) strongly agreed. Base on the date **90,4% or 46** students by 53 students **agreed** that musrif and musrifah be model of students in Ma'had.

Item, 14 musrif or musrifah consistent for conversation use English. There were student (7,5%) strongly disagreed, 22 students (41,5%) disagree, 25

students (47,2%) agreed and 2 students (3,8%) strongly agreed. Base on the date that **51% or 27** students **agreed** musrif or musrifah very consistent for conversation use English.

Item 15 “English students developing always monitor by musrif or musrifah. There were 4 students (7,5%) strongly disagreed, 13 students (24,5%) disagree, 31 students (58,5%) agreed and 5 students (9,4%) Strongly Agree.base on the date that **67, 9 % or 36** students by 53 students **agreed** that English students developing always monitor by musrif or musrifah.

Item 16, Their English have improved English after joining english language development program in Ma’had Al Jamiah of STAIN Palangka (. There were 1 student (1,9%) strongly disagreed, 13 students (24,5%) disagree, 29 students (54,7%) agreed and 10 students (18,9%) strongly agreed. Base on the date 73, 6% or 39 students by 53 students **agreed** that Their English have improved English after joining english language development program in Ma’had Al Jamiah of STAIN Palangka.

Item 17, the entire English language program runs very effective and agreeable wit planning. There were 2 student (3,8%) strongly disagreed, 26 students (49,1%) disagree, 24 students (45,3%) agreed and 1 students (1,9%) strongly agreed. Base on the date 52,9% Or 28 **disagreed** that all of the English language program run very effective and agreeable wit planning.

Item 18, students always join English activity because perforce. There were 17 student (32, 1%) strongly disagreed, 20 students (37,7%) disagree, 13 students

(24,5%) agreed and 3 students (5,7%) strongly agreed. Base on the date 69,8% or 33 students by 53 students that **disagree** students always join English activity because perforce.

Item 19, students join English activity because they like English . There were 2 student (3,8%) strongly disagreed, 8 students (15,1%) disagree, 33 students (62,3%) agreed and 10 students (18,9%) strongly agree. Base on the date **81,2% or 43** students by 53 **agreed** that students join English activity because they like English.

Item 20, before I joining English program in Mahad I difficult for speaking English. But Students Joined English program in Mahad, students speak English fluently. There were 2 student (3,8%) strongly **disagreed**, 12 students (22,6%) disagree, 35 students (66%) agreed and 4 students (7,5%) strongly agreed. Base on the date **73,5% or 39** students by 53 students agreed that before students joining English program in Mahad, students difficult for speaking English. But Students Joined English program in Mahad, students speak English fluently.

Item 21, if student not obliged, student do not join English language program in mahad. There were 13 student (24,5%) strongly disagreed, 23 students (43,4%) disagree, 13 students (24,5%) **agreed** and 4 students (7,5%) strongly agreed. Base on the date 67,9% or 36 students by 53 agreed that if student not obliged, student do not join English language program in mahad.

Item 22“ Public Speak makes students not confidence. There were 18 student (34,0%) strongly disagreed, 23 students (43,4%) **disagree**, 12 students

(11,%) agreed and 0 student (0 %) strongly agreed. Base on the date 77,8% or 41 students by 53 disagreed that Public Speak makes students not confidence. There were 18 student.

Item 23, students like begin conversation use English language. There were 2 student (3,8) strongly disagreed, 12 students (22,6%) **disagree**, 31 students (58,5%) agreed and 8 students (15,1%) strongly agreed. Base on the date 73,6% or 39 students by 53 student agreed that students like begin conversation use English language. There were 2 students.

Item 24 '' student's favorite English program, they were 3,8% or 2 students all program , 1,9 % or 1 student English debate, 9,4% or 5 students English Drama, 3,8 % or 3,8 students game, 3,8 % or 3,8 students kultum, 1,9% or 1 student Competition, 13,2 % or 7 students nothing, 13,2 % or 7 students public speech, 1,9 % or 1 student subuh activity, 47,2 % or 25 students vocabulary. Base on the date that vocabulary is favorite English language program in Mahad Al Jamiah STAIN Palangka Raya.

In conclusion, the result of the study from the date were found by doing the research on students' perceptions toward English language development program in Ma'had Al Jamiah of STAIN Palangka Raya found that most of the student have positive perception towards English language (see. Item 1, 8, 10, 11, 18, 19, 21, 23). It also most of student positive towards English language development program in Ma'had Al Jamiah of STAIN Palangka Raya.(see item, 2, 3, 4, 5, 6, 7, 9, 16, 17,20, 22).

The result of study almost same with the result of Jerry Anak Ahen study he found that most of the student have positive perception towards English language it also found that most of student positive perception towards English for self expression course. (see chapter II p.8)

Atmosphere and surroundings are made safe boarding, comfortable, and conducive to developing aspects of academic¹, theory given by Sri Iswanti (see Chapter II p.16) if the writer comparison with the theory that atmosphere in Ma'had, it sport the student for developing English, most of fres man have said the atmophere in Mahad is good (See item 9)

According to de Chiara , housing for students is an excellent opportunity to develop and improve the quality of education in Academic Institutions (see chapter II p.16). base on the date, the result that joining the program in Mahad give opportunity to develop and improve the quality of education in academic institution, according to students, Their English have improved English after joining english language development program in Ma'had Al Jamiah of STAIN Palangka and students stated that before their joining English program in Mahad, students difficult for speaking English. But Students Joined English program in Mahad, students speak English fluently (see item 20)

Activities held in the dorm consists of aspects theory given by de Chiara (see chapter II p.15) : The development of reasoning with the guidance and support facilities, such as the formation of study groups and group discussions and the

¹ Sri Iswanti, “ *pembentukan sikap dan kepribadian guru melalui model pendidikan berasrama*”, jogjakarta

provision of shared space. Mahad Al jamiah to create the development of reasoning. It facilities such as formation of study group with guidance the name of musrif and member. The program group discussions does in Mahad are Good Morning English, Let's Argue In English (English Debate): Program most of frees man said they agree with Program (see item , 2, 3, 4, 5, 6, 7, 9,15,16, 17,20, 22). Moral development by directing the students in terms of correct behavior, Impart discipline, belief in God, a sense of respect between faiths and come take care of and maintain the hostel environment and its contents. Ma'had apply Language Court for Impart discipline, In this the program has purpose Maintain discipline official language (English and Arabic) and a certain time to keep the language. Musif will give punish the member who don't talk English in Ma'had. In this program student have agreed (see item 7)