

CHAPTER IV
RESULT OF THE STUDY

A. The students' ability in using relative pronouns in sentence.

Based on the test given to the sample was carried out on 11 July, 2012 at MA Darul Ulum Palangka Raya, which was undertaken in allocated time of 90 minutes, the writer found that the students got variation score after they had done the test which the writer given.

As stated in chapter III, the number of the students taken as the subject of the study were 67 (sixty seven) students. The result of the students' in using appropriate relative pronouns in sentence can be seen in table below.

TABLE 4.1
The Distribution of Frequency and Percentage of Students' Ability in Using Relative Pronouns in Sentence

No.	Score	Number of Student	
		F	%
1	90	6	8,96
2	85	1	1,49
3	80	3	4,48
4	75	3	4,48
5	70	4	5,97
6	65	1	1,49
7	60	15	22,39
8	55	4	5,97
9	50	14	20,90
10	45	3	4,48

11	40	7	10,45
12	35	3	4,48
13	30	2	2,99
14	20	1	1,49
		67	$\Sigma=100$

As what it has described from the table above, there were 10 students or 14,93% of the total sum who got the score between 80-100 were classified as excellent ability, 7 students or 10,45% of the total sum who got the score between 70-79 were classified as good ability, 16 students or 23,88 % of the total sum who got the score between 60-69 were classified as fair ability, 18 students or 26,87% of the total sum who got the score between 50-59 were classified as poor ability, 16 students or 23,88 % of the total sum who got the score between 0-49 were classified as very poor ability.

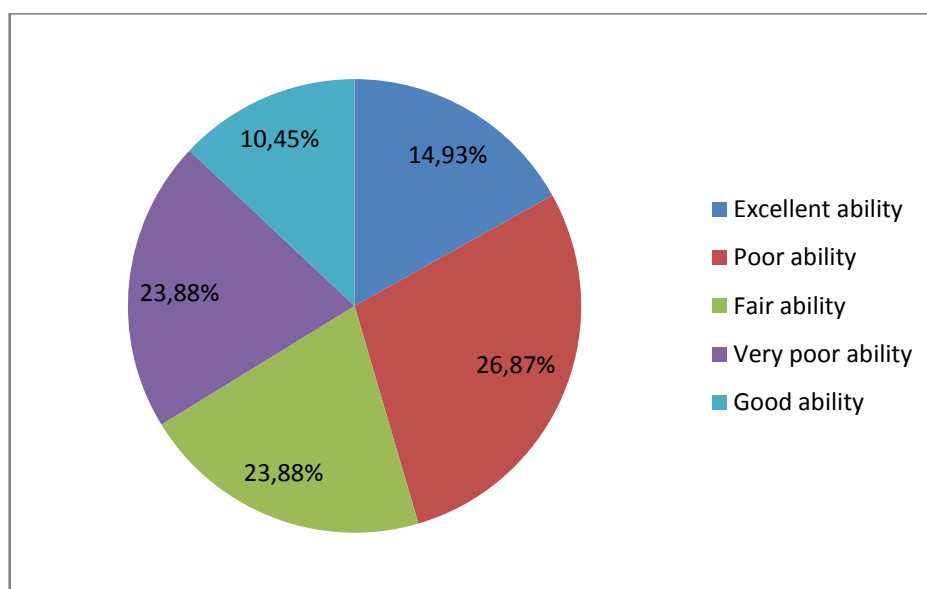


Figure 4.1 The Percentage of Students' ability in Using
Relative Pronouns in Sentence

Then the writer presented the score that have been tabulated before. It was important to know the value of mean score.

Table 4.2
The Frequency Distribution of The Total Scores on The Students Ability
in Using Relative Pronouns in Sentences

Scores (x)	Frequency (f)	Fx
90	6	540
8	1	85
80	3	240
75	3	225
70	4	280
65	1	65
60	15	900
55	4	220
50	14	700
45	3	135
40	7	280
35	3	105
30	2	60
20	1	20
	67	3855

The mean score is analyzed through formula as below:

$$M_x = \sum \frac{FX}{N}$$

$$M_x = \frac{3855}{67}$$

$$M_x = 57,54$$

Considering this sum average of score marked by the students above, where 57,54 was classified as poor ability. As a consequence, the tenth grade students of MA Darul Ulum of Palangka Raya had poor ability in using relative pronouns.

B. The students' problem in using relative pronouns

In this part was presented description of the students' problem relative pronouns in sentence. These were to answer the problem of the study. These were presented in the form of tables and explained based on the tables. Every item that was presented could be known the type of difficulties made by students based on the wrong answers made by them.

The students' problem in using relative pronouns faced by the tenth grade students of MA Darul Ulum Palangka Raya was presented in the form the table as below:

Table 4.3

Number of item	The number of wrong answers	The total of students	Percentage of difficulties faced by students	Type difficulties
1	29	67	43,28%	The students could not use <u>whom</u> in sentence. They answer are 1. who 2. whose
2	16	67	23,88	The students could not use <u>who</u> in sentence. They answer are whom.
3.	38	67	56,72	The students could not use <u>which</u> in sentence. They answer are 1. whose 2. who
4	27	67	40,30	The students could not use <u>whose</u> in

				sentence. They answer are 1.whom 2.which 3.who
5.	25	67	37,31	The students could not use <u>whom</u> in sentence. They answer are who.

Number of item	The number of wrong answers	The total of students	Percentage of difficulties faced by styudents	Type difficulties
6.	8	67	11,94	The students could not use <u>who</u> in sentence. They answer are 1.whom 2.whose
7.	41	67	61,19	The students could not use <u>which</u> in sentence. They answer are whose.
8.	39	67	58,21	The students could not use <u>whose</u> in sentence. They answer are 1.who 2.whom
9.	20	67	29,85	The students could not use <u>who</u> in sentence. They answer are 1.whom 2.whose
10.	16	67	23,88	The students could not use <u>which</u> in sentence. They answer are 1.whose 2.who
11.	21	67	31,34	The students could not use <u>whom</u> in sentence. They answer are 1.who 2.whose

Number of item	The number of wrong answers	The total of students	Percentage of difficulties faced by styudents	Type difficulties
12	47	67	70,15	The students could not use <u>whose</u> in sentence. They answer are 1.who 2.whom
13.	36	67	53,73	The students could not use <u>whose</u> in sentence. They answer are 1.which 2.who
14.	8	67	11,94	The students could not use <u>who</u> in sentence. They answer are whom.
15.	19	67	28,36	The students could not use <u>which</u> in sentence. They answer are whose.
16.	48	67	71,64	The students could not use <u>whom</u> in sentence. They answer are 1.who 2.whose
17.	36	67	53,73	The students could not use <u>whose</u> in sentence. They answer are 1.who 2.whom

Number of item	The number of wrong answers	The total of students	Percentage of difficulties faced by styudents	Type difficulties
18.	26	67	38,80	The students could not use <u>who</u> in sentence. They answer are 1.whom 2.whose
19.	14	67	20,90	The students could not use <u>which</u> in sentence. They answer are whose.
20.	42	67	62,69	The students could not use <u>whom</u> in sentence. They are answer are 1.whose 2.who

The description of the students' difficulties in using relative pronouns could be explained as below:

1. There were 48 students or 71,64 % couldn't answer item of number 16, they could not use relative pronouns which function for person as object that was *whom*.
2. There were 47 students or 70,15% could not answer item of number 12, they could not use relative pronouns which function for possessive that was *whose*.

3. There were 42 students or 62,69 % could not answer item of number 20, they could not use relative pronouns which function for person as object that was *whom*.
4. There were 41 students or 61,19 % could not answer item of number 7, they could not use relative pronouns which function for thing as subject or object that was *which*.
5. There were 39 students or 58,21% could not answer item of number 8, they could not use relative pronouns which function for possessive that was *whose*.
6. There were 38 students or 56,72% could not answer item of number 3, they could not use relative pronouns which function for thing as subject or object that was *which*.
7. There were 36 students or 53,73% could not answer item of number 13, they could not use relative pronouns which function for possessive that was *whose*.
8. There were 36 students or 53,73% could not answer item of number 17, they could not use relative pronouns which function for possessive that was *whose*.
9. There were 29 students 43,28% could not answer item of number 1, they could not use relative pronouns which function for person as object that was *whom*.

10. There were 27 students or 40,30% could not answer item of number 4, they could not use relative pronouns which function for possessive that was *whose*.
11. There were 26 students or 38,80% could not answer item of number 18, they could not use relative pronouns which function for person as subject that was *who*.
12. There were 25 students or 37,31 % could not answer item of number 5, they could not use relative pronouns which function for person as object that was *whom*.
13. There were 21 students or 31,34 % could not answer item of number 11, they could not use relative pronouns which function for person as object that was *whom*.
14. There were 20 students or 29,85 % could not answer item of number 9, they could not use relative pronouns which function for person as subject that was *who*.
15. There were 29 students or 28,36 % could not answer item of number 15, they could not use relative pronoun which function for thing as subject or object that was *which*.
16. There were 16 students or 23,88 % could not answer item of number 2, they could not use relative pronouns which function for person as subject that was *who*.

17. There were 16 students or 23,88 % could not answer item of number 10, they could not use relative pronouns which function for thing as subject or object that was *which*.
18. There were 14 students or 20,90 % could not answer item of number 19, they could not use relative pronouns which function for thing as subject or object that was *which*.
19. There were 8 students or 11,94% could not answer item of number 4 , they could not use relative pronouns which function for person as subject that was *who*.
20. There were 8 students or 11,94% could not answer item of number 16 , they could not use relative pronouns which function for person as subject that was *who*.

From the result above, it can be explained that the result showed that the student problem percentage in relative pronouns *whose* was 32.69%, in relative pronouns *whom* was 29.15%, in relative pronouns *which* was 24.38%, and for relative pronouns *who* was 13.78%.

Based on the result of the test there were percentage of items in the form the table as follow.

Table 4.4
The Percentage of Item in Using Relative Pronoun in Sentence

Number of Items	Correct answer of students	%	Wrong answer of students	%
1	38	2.84	29	2.16
2	51	3.81	16	1.19
3	28	2.09	39	2.91
4	40	2.99	27	2.01
5	42	3.13	25	1.87
6	59	4.40	8	0.60
7	26	1.94	41	3.06
8	28	2.09	39	2.91
9	47	3.51	20	1.49
10	51	3.81	16	1.19
11	46	3.43	21	1.57
12	20	1.49	47	3.51
13	31	2.31	36	2.69
14	59	4.40	8	0.60
15	48	3.58	19	1.42
16	19	1.42	48	3.58
17	31	2.31	36	2.69
18	41	3.06	26	1.94
19	53	3.96	14	1.04
20	25	1.87	42	3.13
	$\Sigma=783$	$\Sigma=58.44$	$\Sigma=557$	$\Sigma=41.56$

Based on the table above, there were 38 students (2.84%) in item no 1 that correct answers, 51 students (3.81%) in items no 2 that correct answers, there were 28 students (2.09%) in item no 3 that correct answers, there were 40 students

(2.99%) in item no 4 that correct answers, there were 42 students (3.13%) in item no 5 that correct answers, there were 59 students (4.40%) in item no 6 that correct answers, there were 26 students (1.94%) in item no 7 that correct answers, there were 28 students (2.09%) in item no 8 that coreect answers, there were 47 students (3.51%) in item no 9 that correct answers, there were 51 students (3.81%) in item no 10 that correct answers, there were 46 students (3.43%) in item no 11 that correct answers, there were 20 students (1.49%) in item no 12 that correct answers, there were 31 students (2.31%) in item no 13 that correct answers, there were 59 students (4.40%) in item no 14 that correct answers, there were 48 students (3.58%) in item no 15 that correct answers, there were 19 students (1.42%) in item no 16 that correct answers, there were 31 students (2.31%) in item no 17 that correct answers, there were 41 students (3.06%) in item no 18 that correct answers, there were 53 students (3.96%) in item no 19 that correct answers, there were 25 students (1.87%) in item no 20 that correct answers.

Based on the table above, there were 29 students (2.16%) in item no 1 that wrong answers, there were 16 students (1.19%) in item no 2 that wrong answers, there were 39 students (2.91%) in item no 3 that wrong answers, there were 27 students (2.01%) in item no 4 that wrong answers, there were 25 students (1.87%) that wrong answers, there were 8 students (0.60%) in item no 6 that wrong answers, there were 41 (3.06%) in item no 7 that wrong answers, there were 39 students (2.91%) in item no 8 that wrong answers, there were 20 students (1.49%) in item no 9 that wrong answers, there were 16 students (1.19%) in item no 10 that wrong answers, there were 21 students (1.57%) in item no 11 that wrong

answers, there were 47 students (3.51%) in item no 12 that wrong answers, there were 36 students (2.69%) in item no 13 that wrong answers, there were 8 students (0.60%) in item no 14 that wrong answers, there were 19 students (1.42%) in item no 15 that wrong answers, there were 48 students (3.58%) in item no 16 that wrong answers, there were 36 students (2.69%) in item no 17 that wrong answers, there were 26 students (1.94%) in item no 18 that wrong answers, there were 14 students (1.04%) in item no 19 that wrong answers, there were 42 students (3.13%) in item no 20 that wrong answers.

From the result above, it can be explained that the result showed that low score was 58.44% of correct answers. The result showed that low score was 41.56% of wrong answers.